

and W.B.C. II, 100. The ratio of R.B.C. to W.B.C. is about 235:1. The W.B.C. were almost round with or without granules in the cytoplasm. They also vary in size like the R.B.C.

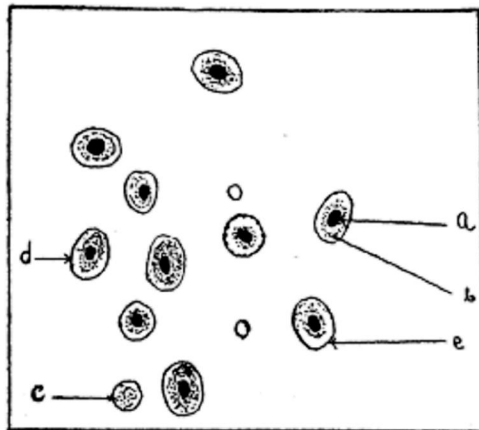


FIG. 1 Camera lucida of the blood cells of *H. fossilis*, X 500. a nucleus; b, cytoplasm; d, cell wall; c, R.B.C.; e, W.B.C.

The length of R.B.C. was studied in several preparations and it was found to vary from 5 to 13 Micra though in most of them the size varied from 8 to 13 Micra lengthwise and 9 to 11 Micra breadthwise. The size of the nucleus of R.B.C. was also measured which was found to vary from 3 to 4.66 Micra. The length of the W.B.C. was found to vary from 5.8 to 9.32 Micra lengthwise.

The fishes were starved to a maximum period of two months, even then no change was observed during any stage in this period in the majority of the R.B.C. But a few R.B.C. were found which varied in length from 18 to 23 Micra lengthwise and 13 to 16 Micra breadthwise and the length of the nucleus was always about 9 Micra.

To determine the coagulation time of the blood of this fish, a sensitive stopwatch and fine capillary glass tubes were used. It was performed at room temperature during May and June (92° F.) and in this case it was exactly 28 sec., which corresponds with the coagulation time of *O. punctatus* as observed by Dhar.<sup>1</sup>

The author wishes to acknowledge his gratitude to Dr. R. K. Sharan for his help and encouragement.

Dept. of Zoology,  
Science College,  
Patna, November 5, 1956.

V. BANERJEE.

#### USE OF RADIOACTIVE TRACERS IN THE STUDY OF POLLEN TUBE GROWTH

A KNOWLEDGE of the extent of pollen tube growth in the style is necessary for understanding the cause of failure of seed-set in self- and cross-incompatible combinations. Such information will be useful in devising means to overcome barriers to fertilisation which result from stigmatic inhibition of pollen germination or inadequate growth of the pollen tube in the style.<sup>1</sup> Pollen tube growth is usually studied by style dissection followed by suitable staining or by phase-contrast observations. In our studies in the genus *Nicotiana*, we found the following technique involving the use of radioactive isotopes like those of phosphorus (<sup>32</sup>P) or sulphur (<sup>35</sup>S), provides a rapid and reliable means of estimating the extent of pollen tube growth in incompatible crosses. A similar technique is described in a paper by Ar-Rushdi,<sup>2</sup> which appeared while the present study was under way.

The cross between *N. rustica* and *N. tabacum* succeeds if *rustica* is used as the pistillate parent but there is seldom any seed-set in the reciprocal cross. The style of *tabacum* is nearly thrice as long as that of *rustica* and we suspected that this difference in style length may contribute towards the failure of the cross in which *tabacum* is the pistillate parent. To ascertain this, some plants which had commenced flowering were transferred to glass jars containing ½ litre of Hoagland's Solution No. I, without P or S while using <sup>32</sup>P and <sup>35</sup>S respectively. <sup>32</sup>P in the form of H<sub>3</sub>PO<sub>4</sub> or <sup>35</sup>S in the form of H<sub>2</sub>SO<sub>4</sub> was added to the nutrient solution at the rate of 1 millicurie per ½ litre of solution and the pH was adjusted to 5.8. The amount of radioactivity shown by the pollen of plants treated in this way was measured with a pocket battery monitor; the maximum activity (50 to 100 counts per second) was shown 3 days after treatment in the case of <sup>32</sup>P and 5 days in the case of <sup>35</sup>S.

Pollen from *rustica* and *tabacum* plants treated in this way were used to make reciprocal crosses, using control plants without any treatment as the pistillate parents. The styles from crosses as well as parents were collected 24, 48, 72 and 96 hours after pollination and were exposed to Ilford X-ray film for 120 hours. The autoradiographs thus taken are shown in Fig. 1. The autoradiographs indicated that *rustica* pollen did not grow beyond one-third of the length of *tabacum* style. This observation was independently confirmed in style dissection preparations made according to a

1. Dhar, R. P., *Proc. Zool. Soc., Bengal*, 1948, 1, 67.

modified schedule of Buchholz's method.<sup>3</sup> Thus, the tracer technique provides a correct picture of the extent of pollen tube growth.



FIG. 1. (a) Ovary, style and stigma of *N. rustica* (left) and *N. glauca* (right) plants grown in <sup>32</sup>P solution. (b) Growth of *rustica* pollen tubes in *tabacum* styles, 72 hours after pollination. (Autoradiographs—Natural size.)

The dose of <sup>32</sup>P and <sup>35</sup>S added to the nutrient solution had no adverse effects on pollen fertility or functionability, as tested by germination in an agar-sucrose medium and stainability in aceto-carmin. Also, normal capsules with viable seeds could be obtained by selfing the flowers of treated plants. Though the absorption of <sup>32</sup>P by the plants is better than <sup>35</sup>S, it will be economical in such tracer studies to use <sup>35</sup>S since it has a half-life of 87.1 days and different plants can be kept in the same solution one after the other.

We are indebted to Dr. B. P. Pal and Dr. S. M. Sikka for their encouragement and interest in the study.

Indian Agric. Res. M. S. SWAMINATHAN.

Inst., New Delhi, B. RADHAKRISHNA MURTY.  
November 16, 1956.

1. Swaminathan, M. S., *Nature*, 1955, 176, 887.
2. Ar-Rushdi, A. H., *J. Genetics*, 1956, 54, 23.
3. Buchholz, A., *Stain Tech.*, 1931, 6, 13.